



AUDUBON'S WARBLER

Vol. 42 no. 10 - December 2013
Newsletter of Kern Audubon Society
A chapter of National Audubon Society
www.kernaudubonsociety.org
www.kastehachapibird.org

ANNUAL HOLIDAY GATHERING & POTLUCK

Tues. DEC 3, 2013 - 6:30PM

Kern Supt of Schools, 17th & L Sts.

*Kern Audubon is planning an evening of holiday fun,
good food, fund-raising and a special program....join us!!*

*Greg Iger, Photographer
"Scenes of Kern County"*

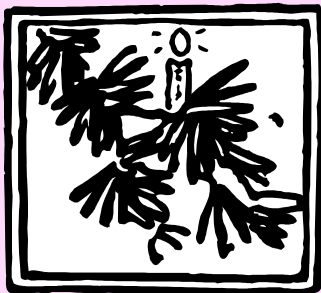


He has photographed some of the military's top brass, Hollywood's old guard, politicians, presidential hopefuls, and countless anxious brides and grooms, but after nearly a half-century behind the lens, it is still Kern County's splendid landscapes that move Greg Iger, the man widely and affectionately considered Kern County's unofficial photographer. Today his photographs line the walls of area hospitals, corporate headquarters and office buildings across town. Greg Iger will be our December guest speaker along with a photographic presentation of some of his iconic photos of Kern County.

**Bring a POTLUCK ITEM to share:
main dish (serving 8-10), salad or dessert
Table service & drinks provided**

There will also be an AUCTION, both live & silent!

Heather Ellison is the auction coordinator this year and these are just some of the items that will be up for auction....



Sequoia Sandwich shop gift certificate

CALM Membeship certificate

Bakersfield Symphony tickets

Abundant Harvest food box

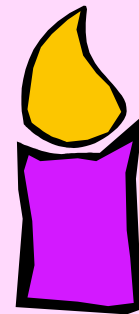
Urrichios gift certificate

Bird seed

Joe Bugni's honey

GREG IGER PHOTO

and much more.....



If you have Items you'd like to donate to the auction, please email (hk_ellison@yahoo.com) a brief description and a suggested starting bid so that bidding sheets can be prepared in advance or give Heather a call: 319-4721

Bird or birding-related items are welcome as are other gift items, such as artwork, wreaths, homemade jams, quilts, etc.
If you will be unable to attend but have an item you'd like to donate, call Heather

Bring cash or checkbook as we don't do credit cards!

KERN AUDUBON EXECUTIVE BOARD

2013 - 2014

Harry Love, President/Conservation

love3@bak.rr.com; 589-6245

Sasha Honig, Secretary

sashahonig@gmail.com; 325-0026

Gary McKibbin, Treasurer

gmckibbin@farmersagent.com; 392-1403

Deb See & Bill Moffat, Field Trips

seemoffats@aol.com; 805-0232

Ginny Dallas, Publicity/Programs

vdallas@bak.rr.com - 301-8188

Kathy Love, Hospitality

kathylove64@gmail.com; 589-6245

Pat Turner, Membership Data

patriciajt@att.net; 398-8387

Carol Gates, Tehachapi Rep.

Carol.gates18@gmail.com; 822-0214

Mary Durfrain, Tehachapi Rep.

marysalternative@yahoo.com; 972-4355

Madi Elsea, Past President/Warbler Editor

madielsea@aol.com; 322-7470

PRESIDENT'S NEST



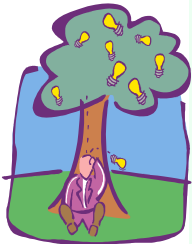
The Kern Audubon Society functions smoothly because of people who volunteer their talents and time to get tasks done. Some tasks are very public, for example, speaking at our monthly meetings, leading field trips, and speaking at public meetings. However, there are people who do essential work for the Chapter. One of them is **Monica Price**. What does she do? She gets the *Warbler* in the mail to you! And that is very important! On her part, that takes folding, sealing and labeling each one. She also drives to the bulk mailing center to have them mailed. She does this without notice. Now, I hope, when you see her the next time, you will show her your appreciation: a **'thank you'**, a handshake, or just a smile. She deserves it. *Thanks, Monica!*

Harry Love, President



KERN AUDUBON ON FACEBOOK

"Like" us on FACEBOOK and add your comments, photos, bird sightings, etc. as well as get information on field trips and programs!



PANORAMA VISTA PRESERVE WORKDAY

On **Saturday, December 14, 9-11 AM**, Kern Audubon will be having its monthly workday at the Preserve. Tasks to be done: pruning, checking water lines, and general maintenance. This is a great opportunity to help restore the native vegetation to the Valley. Last month's crew consisted of Pat Turner, Andy Honig, Madi Elsea, Jan Graves, Clyde Golden, Bill McDonald, and Harry Love. There was also a great crew of student workers from Garces and Foothill high schools. Join us at the gate to the preserve (east end of Roberts Lane off Manor Drive) at 9:00am. Hope you can make it!

Want more information? Just email Harry (love3@bak.rr.com) or call him (805-1420)

KERN AUDUBON-TEHACHAPI

Tues. January 28, 2014

7:00pm - Golden Hills School

20215 Park Rd. Tehachapi

"The Natural History of Kern County"

Alison Sheehy, Speaker

Lakes & Lagoons Field Trip

It was a crisp Tehachapi morning in November and 15 birders (photo on right by Mary Dufrain) gathered to bird watch at 3 area lakes and saw 43 species! The highlight was a field of 50 Mountain Bluebirds flashing their indigo blue! The next outings will be the Tehachapi area Christmas Bird Counts (see p. 3). For more information, contact Mary: marysalternative@yahoo.com or go to the website: kastehachapibird.org



WEBSITES to check out...

Info about birds? To learn more about birds, go to www.birds.cornell.edu, the website of Cornell Lab of Ornithology, the world leader in the study and conservation of birds.

Kern Birding For a great website about Kern County birding spots: www.natureali.org/birding.htm.

Audubon California has an excellent website about its activities and organization: www.Audubon-ca.org

Audubon in the news - To find out more about National Audubon go to: www.audubon.org or chapterleaders@audubon.org



DECEMBER FIELD TRIPS

Sat. Dec. 7, 8:00am - Wind Wolves Preserve

Wind Wolves is a 100,000 acre preserve in southern Kern Co with grasslands and mountains and great birding! Preserve biologist Megan Lundin will lead this outing which should include raptor sightings. Meet at the ParknRide on Stockdale Hiway near Hiway 99 at 8am to carpool. Bring water, snacks & sack lunch and \$5 for gas; return after lunch. For info call Deb: 805-0232.

Wed. Dec. 18, 8:30am - Panorama Vista Preserve

As part of the Christmas Bird Count, we will observe and count birds at Panorama Vista Preserve, which is below the Panorama Bluffs and along the Kern River. Meet Deb & Bill at the gate to the preserve located at the east end of Roberts Lane (take Roberts Lane off of Manor Drive and go approx. 1 mile). Bring water, snacks, binocs. This will be a walking outing, so wear sturdy shoes. Call Deb for info: 805-0232

Sat. December 28, 3:00pm – Cranes, Comet & Sunset at Pixley NWR

8,000 CRANES, 15,000 WHITE-FACED IBIS at Pixley National Wildlife Refuge plus the COMET ISON will highlight this outing sponsored by Tulare Audubon in conjunction with Kern Audubon. The comet Ison makes its highly anticipated approach to the earth in late December and **should be the brightest comet to grace our skies in decades, surely an event not to be missed!** While waiting for the skies to get dark enough to see the comet, we will witness the fly-in of thousands of Sandhill Cranes and White-faced Ibis. • • Hearing and seeing 8,000 Sandhill Cranes descend into the marshes of the refuge at sunset is certainly one of the premiere nature events in all of California. Meet at the Rosedale Costco parking lot near the gas station at **3:00pm** to carpool. Bring \$5, water/snacks, flashlight and dress warmly. You can view the fly-in from the parking lot or take the 3/4 mile walk to the viewing platform. Call Madi for info: 322-7470.

CHRISTMAS BIRD COUNTS - KERN COUNTY

One of the traditions long-associated with Audubon is the annual Christmas Bird Count. Even older than Audubon itself, the CBC began in 1900 as an alternative to the traditional Christmas BIRD HUNT, in which teams shot as many birds as possible. The first count included 27 people in 25 locations, but they were armed with pencils and binoculars! The CBC is the oldest bird census in the world with over 50,000 volunteers in 2000 locations, providing one of the most important bodies of information on wildlife data in the world. The goal is to count all the birds in a 15 mile radius with teams being assigned to a section in that radius. If you are interested in participating in these daylong counts, contact the compiler listed below or if you have questions, contact Alison Sheehey at natureali@gmail.com or go to her website: <http://www.natureali.org/cbcs.htm>

Sat.14 Dec – Butterbredt CBC (Chuck Bragg, compiler- 310/454-9662)

Sat.14 Dec – Lancaster, LA/Kern Co (Mary & Nick Freeman, compilers – 818/247-6172)

Sun.15 Dec – China Lake CBC (Peter Woodman, compiler – 760/377-3466)

Wed.18 Dec – Bakersfield CBC (John Wilson, compiler – 661/336-0283)

Sat.21 Dec – Buena Vista CBC (Alison Sheehey, compiler - 760/417-0286)

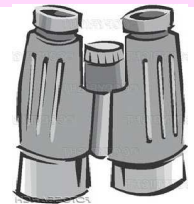
Mon.23 Dec – Tehachapi CBC (Larry Parmeter, compiler - 559/276-8753)

Sat.28 Dec – Carrizo Plain -partially in Kern Co (Roger Zachary, compiler – 805/466-6222)

Fri. 3 Jan - Bear Valley Springs - (Ron Melin, compiler - 310/540-2775)

Sat.4 Jan – South Fork Valley CBC (Denise LaBerteaux, compiler – 760/378-4278)

Sun.5 Jan – Kern River Valley CBC (Alison Sheehey, compiler – 760/417-0286)



Endangered Species Act Turns 40 This Month

When Congress passed the **Endangered Species Act (ESA)** in 1973 and signed by President Nixon, it recognized that our rich natural heritage is of “esthetic, ecological, educational, recreational, and scientific value to our Nation and its people.” It further expressed concern that many of our nation’s native plants and animals were in danger of becoming extinct.

The purpose of the ESA is to protect and recover imperiled species and the ecosystems upon which they depend. It is administered by the U.S. Fish and Wildlife Service and the Commerce Department’s National Marine Fisheries Service (NMFS). The FWS has primary responsibility for terrestrial and freshwater organisms, while the responsibilities of NMFS are mainly marine wildlife.

Under the ESA, species have been listed as either endangered or threatened. “Endangered” means a species is in danger of extinction throughout all or a significant portion of its range. “Threatened” means a species is likely to become endangered within the foreseeable future.

There are continual efforts to add species to the list, most recently the western yellow-billed cuckoo. The **Audubon Society**, along with other environmental groups, has been instrumental in providing data to the agencies. But more importantly, it is the **members of Audubon** who have attended meetings, written letters, and signed petitions. The results have caused many species to be added.

AUDUBON'S WARBLER

Kern Audubon Society
PO Box 3581
Bakersfield CA 93385



www.kernaudubonsociety.org

Non-Profit Org
US Postage
PAID
Bakersfield CA
Permit #93

RETURN SERVICE REQUESTED

Join KERN AUDUBON for these activities...

- Tues. Dec. 3, 6:30pm - Holiday potluck & Auction
- Sat. Dec. 7, 8:00am - Wind Wolves Preserve outing
- Sat. Dec. 14, 9 - 11am - PVP Workparty
- Wed. Dec. 18, 8:30am - Panorama Vista Preserve field trip

Membership Application -- KERN AUDUBON SOCIETY (C2ZC300Z)

If you would like to be part of a grass-roots conservation organization with a distinguished history, join the National Audubon Society and Kern Audubon! Please complete the form below and send with your check !

Membership includes *Audubon Magazine* (6 Issues) and the *Audubon's Warbler* (10 issues)

____New Member \$20

Make check payable to **NATIONAL AUDUBON SOCIETY**

Send this form and your check for \$20 to:

Kern Audubon
PO Box 3581
Bakersfield CA 93385

Name(s) _____ Amount enclosed _____

Address _____ City _____ Zip Code _____

E-mail _____ Phone # _____