



# AUDUBON'S WARBLER

Vol. 43 no. 2 - February 2014  
Newsletter of Kern Audubon Society  
A chapter of National Audubon Society  
www.kernaudubonsociety.org  
www.kastehachapibird.org

Kern Audubon Society  
Tuesday February 4, 2014 - 7:00pm  
Kern Supt of Schools, 17th & L Sts.

## "Svalbard Adventure: Arctic Summer & Wildlife"

Presented by Bill & Greta Lydecker



*Imagine a place where you are surrounded by blues and grays, browns and greens and white and the sun is never overhead but never sets. You see ice and snow, water and sky, mountains, arctic wildlife and plants.*

*Spitzbergen - pointed peaks - was officially discovered in 1596 by the Dutch explorer, Willem Barents. In the 20th Century, Norway renamed the island group Svalbard - cold coast - after a reference in a 1194 Viking saga. The Svalbard archipelago is located about midway between Norway and the north pole. Many Arctic explorers launched their quests to try to reach the North Pole from Svalbard. Walrus and seals, polar bear, reindeer, thousands of nesting birds, glaciers and ice, the short arctic summer and fragile arctic ecosystem are all topics to be explored in this February 4th program.*

Come and share the experience of Bill & Greta Lydecker, Kern Audubon members, through their images of the arctic taken last summer during a ten day Svalbard expedition cruise!



### FEBRUARY FIELD TRIPS

**Sat Feb 8 & Sun Feb 9** - Carrizo Plain, Bitterwater Road, Morro Bay

Kern Audubon will join with Tulare Audubon on this annual weekend outing to see a huge variety of winter birds, from raptors to shorebirds, from bluebirds to waterfowl. Participation can be for Saturday only, Sunday only, or both days! Participants should call Deb See to RSVP and for more information. Three meeting times/places will be available:

- Saturday morning, Feb. 8th, meet in Bakersfield to carpool at 6:45am at the Kern River Parkway parking lot on Stockdale & Don Hart Drive, across from CSUB
- Saturday morning, Feb 8th, 8:15am on Hiway 46 at Parkfield (just west of the intersection of Hiway 46 & Hiway 41, not Hiway 33 as reported in Madi's email). This will be a place to rendezvous with Tulare Audubon.
- Sunday morning, Feb. 9th, 8am at the Morro Bay Natural History Museum

If you'd like to carpool or caravan, please contact Deb See: 589-6245 or seemoffats@aol.com

### **Wed. Feb. 19, 8:00am - Lake Ming**

Roger Coley (832-1820) will lead this field trip at Lake Ming to see migrants, waterfowl and resident birds. Meet at the entrance to Lake Ming off Alfred Harrell Hiway near the marina. Bring binocs, walking shoes, sun hats, snacks/water.

### **Sunday Feb. 23, 4:00pm - Pixley Nat'l Wildlife Refuge**

This will be the last field trip to see the Sandhill Cranes at sunset before they fly north to their breeding and nesting grounds. We will meet at the Rosedale Costco parking lot near the gas station to carpool to Pixley NWR. Bring snacks, water, flashlights, good walking shoes as there is a 1/2 mile walk to the viewing platform. Contact the leader, Madi Elsea, for information: 322-7470. Returning about 7:30pm.



## KERN AUDUBON EXECUTIVE BOARD

**2013 - 2014**

Harry Love, President/Conservation

love3@bak.rr.com; 589-6245

Sasha Honig, Secretary

sashahonig@gmail.com; 325-0026

Gary McKibbin, Treasurer

gmckibbin@farmersagent.com; 392-1403

Deb See & Bill Moffat, Field Trips

seemoffats@aol.com; 805-0232

Ginny Dallas, Publicity/Programs

vdallas@bak.rr.com - 301-8188

Kathy Love, Hospitality

kathylove64@gmail.com; 589-6245

Pat Turner, Membership Data

patriciajt@att.net; 398-8387

Carol Gates, Tehachapi Rep.

Carol.gates18@gmail.com; 822-0214

Mary Durfrain, Tehachapi Rep.

marysalternative@yahoo.com; 972-4355

Madi Elsea, Past President/Warbler Editor

madielsea@aol.com; 322-7470

## PRESIDENT'S NEST



We welcome 2014 with many challenges and hopefully will end the year with many successes. I think it is appropriate that we begin the new year with a look at the mission of the Audubon Society: *"Audubon's Mission: To conserve and restore natural ecosystems, focusing on birds, other wildlife, and their habitats for the benefit of humanity and the earth's biological diversity. For more than a century, Audubon has built a legacy of conservation success by mobilizing the strength of its network of members, Chapters, Audubon Centers, state offices and dedicated professional staff to connect people with nature and the power to protect it. A powerful combination of science, education and policy expertise combine in efforts ranging from protection and restoration of local habitats to the implementation of policies that safeguard birds, other wildlife and the resources that sustain us all--in the U.S. and Across the Americas."*

Harry Love, President

## HOLIDAY GOOD NEWS FOR BIRDS IN THE ALASKAN WILDLIFE REFUGE

On December 23, 2013, migratory birds received a fantastic holiday gift—Secretary of Interior Sally Jewell signed the final decision to keep Izembek National Wildlife Refuge in Alaska intact, denying a damaging proposed road.

The misguided and harmful proposed road would have cut through Izembek's protected Wilderness, pristine habitat that Audubon and other conservation groups have been working to save for nearly 20 years. Izembek is one of the world's most critically important wetlands for many hundreds of thousands of migrating birds. In some years, virtually all of the world's Pacific Black Brant use Izembek, including birds from Alaska, Russia, and Canada. In addition, up to 70 percent of the world's population of Steller's Eiders, listed as threatened under the Endangered Species Act, use Izembek Lagoon. Long-distance shorebird migrants such as Pacific Golden-Plovers and Bar-tailed Godwits also depend on Izembek to fuel up for migration.

Many thanks to all of you, including 36 Audubon chapters in the Pacific Flyway, who sent comments and letters in support of keeping Izembek intact. This victory *is a wonderful way for Audubon to start 2014!*

## Thanks to Our Fantastic Monthly Volunteers

Many people make our monthly programs run smoothly because they volunteer their time. The jobs are to bring refreshments, to be a greeter and to help sell raffle tickets. For 2013, the following people volunteered their time and talent. Refreshments were provided by **Sasha Honig, Lucy Clark, Arlene Burrows, Heather Ellison, Monica Price, Lynn McDonald, Carol Gates, David Davis, Deb See, Patty Richardson, Al & Cindy Caetano, Louise Clay, Barbara Coley, Maria Polite, Kathy Love.** Our greeters were **Pat Bonas, Andy & Sasha Honig, Paula Mande, David Davis, Lynn James, Monica Price, Guinevere and Heather Ellison, Gary McKibbin, Al & Cindy Caetano, Patty Richardson.** Raffle salespeople were **Monica Price, Paula Mande, Gary McKibbin, Lucy Clark, Al and Cindy Caetano, Bill Moffat, Guinevere and Heather Ellison, Lousie Clay.** You may notice that many people did all three chores. Please contact me if you'd like to volunteer to help with these tasks for the coming year. My apologies to anyone whom I inadvertently missed!

Kathy Love (589-6245)

Hospitality Chair

## WEBSITES to check out...

**Info about birds?** To learn more about birds, go to [www.birds.cornell.edu](http://www.birds.cornell.edu), the website of Cornell Lab of Ornithology, world leader in the study and conservation of birds

**Kern Birding** For a great website about Kern County

birding spots: [www.natureali.org/birding.htm](http://www.natureali.org/birding.htm).

**Audubon California** has an excellent website: [www.Audubon-ca.org](http://www.Audubon-ca.org)

**Audubon in the news** - To learn about National Audubon go to: [www.audubon.org](http://www.audubon.org) or [chapterleaders@audubon.org](mailto:chapterleaders@audubon.org)



## KERN AUDUBON ON FACEBOOK

"Like" us on FACEBOOK and add your comments, photos, bird sightings, etc. as well as get information on field trips and programs!



# 17<sup>TH</sup> ANNUAL GREAT BACKYARD BIRD COUNT

Counting birds is a fun, free, family-friendly way to discover and help the birds in your community.

▶ Visit [birdcount.org](http://birdcount.org) to learn more.

February 14-17, 2014



*American Robin by 2013 GBBC Participant Gwen Starrett*



SPONSORED IN PART BY



## **Audubon Tips on How to Help Migrating Birds**

Every spring, billions of birds travel from their winter homes in the south to their summer breeding grounds as far north as the Arctic. They often fly at night, when skies are less turbulent and air temperatures cooler for this high-energy exercise. We can do our part to help keep them safe from the perils they encounter with a few simple steps. **Audubon's 10 Tips:**

**1. Make your yard a bird oasis** - Start by providing the five basics: clean water, plants with flowers for nectar and insects (songbirds feed insects to their young), fruit-bearing plants to provide fuel for migration and winter, layers of plants for cover and thermal protection, and nesting habitat and materials. Native plants are key—their architecture, flowers, fruits, and scents are ideal for restoring the communities and relationships birds depend on.

**2. Become a Citizen Scientist** - Everyday bird observations provide crucial data for scientists studying the big and small questions about bird lives, from migration to the effects of global climate change. You can help by becoming a citizen scientist, observing and noting the kinds of birds you see.

**3. Create communities** - Share your passion for birds with family and friends. And expand your patch of bird habitat into a larger urban oasis by working with neighbors and managers of nearby parks, golf courses, and farms. Restoring bird habitat can also help mitigate a city's "heat island effect," absorb storm water runoff, and combat the spread of invasive plants.

**4. Forgo pesticides** - Since Rachel Carson's *Silent Spring* was published five decades ago, pesticide use in North America has grown to exceed 1.1 billion pounds annually. Roughly eight percent of that is applied to yards and gardens. One particular lawn-care pesticide, diazinon, has been implicated in more than 150 mass bird die-offs.

**5. Shop for the birds** - Buying grass-fed meat supports grassland birds, which, because of habitat loss, are showing the most sustained declines of any bird group in the United States. Switch to shade-grown coffee. Each cup preserves roughly two square feet of rainforest.

**6. Join "Lights Out"** - Glass-fronted buildings with bright nighttime lighting may be architecturally pleasing, but they're deadly. Up to a billion birds—mostly migrants—are killed in building collisions in North America each year.

**7. Save energy, cut carbon emissions** - Leaving your car at home twice a week—and walking or biking instead—can reduce your emissions by two tons a year (and it's healthy for you, too). Make conservation a family challenge. Keep a journal and award points for conservation activities, including miles walked, biked, or covered on mass transit instead of driving; each time lights are turned off when leaving the room; and unplugging electronic devices overnight.

**8. Part with plastics** - The first plastic bags were produced in 1957, according to Worldwatch Institute, and we now throw away 100 billion a year. Every year the floating "bladders" of these bags kill hundreds of thousands of seabirds—along with sea turtles and marine mammals—which mistake them for jellyfish and squid, and then starve to death after filling their guts with plastic.

**9. Curb your cats** - Keep your felines inside or in outdoor "kitty condos." America's estimated 150 million outdoor cats kill serious numbers of birds—up to 3.7 billion a year, according to a new report from the U.S. Fish and Wildlife Service and Smithsonian's Migratory Bird Center.

**10. Adopt-a-species** - Pick a bird species from your flyway. Become an advocate for that species: work to protect and restore its habitat, educate your community, talk with school kids, or volunteer at a preserve. Learning about "your" species

**MOUNTAIN PLOVERS AT TEJON RANCH** In January, the Tejon Ranch Conservancy counted six Mountain Plovers in Antelope Valley. While the number isn't particularly high, the location is significant. Just an hour's drive from Los Angeles, a visit to the Tejon Ranch gives one the sense of stepping back in time. In 2008, Audubon California joined five other environmental organizations in a landmark agreement with the Tejon Ranch Company to preserve up to 240,000 acres of this spectacular and ecologically significant land. The Mountain Plover sighting is an example of how important it was to protect this land.

Despite its name, the Mountain Plover is actually a resident of arid plains and prairies, rather than mountains. This unwary species is often quite approachable, a trait which has proven unfortunate. When intruded upon, the Mountain Plover will often choose to run rather than fly. Because of this behavior and loss of habitat, the species is a red category under the Audubon watchlist. The great news about Tejon Ranch is it offers habitat that is untouched and for the use of local species. 90% of the ranch is for ranching and conservation purposes only. Six years after the conservation agreement, it is rewarding to see the efforts to protect Tejon Ranch has worked and that Mountain Plovers are now calling it home!



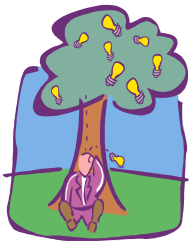


**YEAR-END APPEAL**...Once again there has been a generous response to the end-of-the-year appeal in the amount of **\$1945**. The Kern Audubon Executive Board wishes to acknowledge and thank the following persons for your extra gifts toward KAS' plans for continuing to help "create a culture of conservation in Kern County" in 2014!

Dana Adams  
Harvey Brockmeyer  
Steve Carey  
Gary File  
Irene C. Froyd  
Jan Graves  
Fanny & Steve Jacobs  
Carol Lair  
Janet Lund  
Gary McKibbin  
Daniel Nadsady  
Marilyn Radoumis

Jacqueline Appel  
Jim & Arlene Burrow  
Helia M. Corral  
Mylon Filkins  
Carol Gates  
Mrs. Lamar Hiatt  
Jerry & Caryl Kay  
Vicki L. Lohr  
Bill & Greta Lydecker  
Ginger & John Moorhouse  
Joanne Newberry  
Molly & Tony Reid/GK Cunningham  
William Whiteside

Pam & Fred Baugher  
Al & Cindy Caetano  
Patricia Cox  
Peggy Finley  
Pamela L. Goe  
Mark & Randi Hodson  
Ed Kapp  
Jim Lowery  
Bill & Lynn McDonald  
Heather Mueller  
Gloria J. Pauline  
Helen Wheatley



### FEBRUARY WORKDAY AT PANORAMA VISTA PRESERVE

**Saturday, February 8, 9-11 AM**, is Kern Audubon's monthly workday at Panorama Vista Preserve. The chores to be done are maintenance ones: cleaning up litter and removing invasive vegetation around plants. All tools are provided; just bring water, gloves and a hat. A big thanks to **Andy Honig, Harry Love, Vicki Boehning, David Schaad, Lucy Clark, Clyde Golden & Jan Graves** for coming out for January's workday, plus new member, **Linda McMillian!** And a big thanks to a member of the Foothill Interact Club, **Andres Drea**, who did the work of ten! Hope you can make the next workday. Contact Andy Honig (619-4456 or andy5m@bak.rr.com) for more information or directions to the Preserve.

### KERN RIVER PRESERVE VOLUNTEER DAYS

Sean Rowe, Kern River Preserve's Land Steward, reports good turnout in January to plant native saltbush seeds in 150 planting sites with only 1400 sites to go! The goal is to be fully planted by the end of February, so if you can come up to Audubon's preserve near Weldon, your help will be most appreciated! Next volunteer days are **Sat. February 8 & February 15**.

Bring food & water, gloves; wear long sleeves & pants, work shoes. The preserve will supply the tools. Meet at 8:00am at the Alexander Restoration Site on Fay Ranch Rd, 1/3 mile north of Hiway 178 in Weldon, just east of the Kern River Preserve. Contact Sean via email: srowe@audubon.org or 760/378-2531 for information and to RSVP.



### Olympic Birdfest 2014 April 4-6, 2014, Sequim, WA

A bird watching vacation for beginners to experts, from leisurely strolls to active hikes. Bird for a few hours, or all day ... from the dawn chorus to the evening owl prowl. Enjoy guided birding trips, boat tours, silent auction, gala banquet, and more. Featured speaker is Noah Strycker, author of "Bird World: Fascinating Parallels Between Bird and Human Behavior".

BirdFest program information and registration can be found at [www.olympicbirdfest.org](http://www.olympicbirdfest.org).

### KERN AUDUBON LIBRARY

*California Bird Species of Special Concern* is a scientific treatise that describes the title project of identifying at-risk birds and discussing management practices to halt and hopefully reverse their decline. The 7 ranking criteria to qualify for the at-risk bird list are: status, population trends, ecological requirements, threats, management, research and monitoring needs. Habitat loss and deregulation are the greatest threats to these at-risk birds. The latter part of the book details the risk criteria and recommendations of the 63 listed species, plus eleven additional species are discussed. David Schaad, Librarian 428-2841



### WIND WOLVES NEEDS DOCENTS

Megan Lundin, naturalist at Wind Wolves Preserve and Audubon member, is inviting participation in a volunteer naturalist/doctype program being offered to help Wind Wolves with their many school field trips. The typical education program lasts about 3 hours, includes hiking about a mile, stopping at 3 locations to teach using props and hands-on activities for 20 children/2 adults. Training will be provided plus reading materials to prepare for the program. The goal is to have the kids have fun in nature and learn something along the way! Contact Megan for info:

### BIRD BROCHURES AVAILABLE

Kern Audubon has recently acquired new brochures for members to purchase. These are waterproof pocket guides that help you become more knowledgeable about birds and nature. Titles are: **Birds of Prey, Bird Feeding Basics, California Wildflowers & Trees. Price: only \$5.00.** Available at the next KAS meeting February 4th.

## AUDUBON'S WARBLER

Kern Audubon Society  
PO Box 3581  
Bakersfield CA 93385



www.kernaudubonsociety.org

Non-Profit Org  
US Postage  
PAID  
Bakersfield CA  
Permit #93

## RETURN SERVICE REQUESTED

Join KERN AUDUBON for these activities...

- Tues. Feb 4, 7:00pm - Program & meeting
- Sat. Feb. 8, 9 - 11am - PVP Workparty
- Sat-Sun. Feb 8 & 9 - Morro Bay/Carrizo Plain
- Wed. Feb 19, 8:00am - Lake Ming field trip
- Sun. Feb 23, 4:00pm - Sandhill Crane field trip

### Membership Application -- KERN AUDUBON SOCIETY (C2ZC300Z)

If you would like to be part of a grass-roots conservation organization with a distinguished history, join the National Audubon Society and Kern Audubon! Please complete the form below and send with your check !

Membership includes *Audubon Magazine* (6 Issues) and the *Audubon's Warbler* (10 issues)

\_\_\_\_ New Member \$20

Make check payable to NATIONAL AUDUBON SOCIETY

Send this form and your check for \$20 to:

Kern Audubon  
PO Box 3581  
Bakersfield CA 93385

Name(s) \_\_\_\_\_ Amount enclosed \_\_\_\_\_

E-mail \_\_\_\_\_ Phone # \_\_\_\_\_