



AUDUBON'S WARBLER

Vol. 41 no. 60 - December 2012
Newsletter of Kern Audubon Society
A chapter of National Audubon Society
www.kernaudubonsociety.org
www.kastehachapibird.org

Kern Audubon
ANNUAL HOLIDAY GATHERING & POTLUCK
Tues. DEC 4, 2012 - 6:30PM
University Square - 20th & K Sts.
(Note the change in location & time!!)

*Kern Audubon is planning an evening of holiday fun,
good food, fund-raising and a special program....join us!!*



Western Screech Owl, by Mary Dufrein

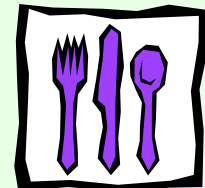
BIRDS OF TEHACHAPI Mary Dufrein, Photographer

A note from Mary: About ten years ago I noticed a white hummingbird that had come to one of my feeders in the Tehachapi's. I believe she had been blown in on a summer storm front the day before. I thought she was so amazing. I decided to call the only bird club I could find in the phonebook (Tehachapi Mountain Bird Club) and see if they would also be amazed. I was hooked! I started paying attention to every bird I saw. Over the years I started submitting my photos to the TMBC web-site where others could view them and also vote on them. I thought it was great way to share the variety of birds that have visited my Tehachapi Home. I've lived in the Tehachapi Mountains for over twenty years. I'll present a short slide show of some of the birds I have photographed during that time.

Mary is a new member of Kern Audubon and a very talented photographer!



Bring a POTLUCK ITEM to share:
main dish (serving 8-10), salad or dessert
Table service & drinks provided



There will also be an AUCTION, both live & silent!

Joe Bugni and Heather Ellison are the auction coordinators this year. If you have items you'd like to donate to the auction, please email a brief description and a suggested starting bid so that bidding sheets can be prepared in advance or give one of them a call.

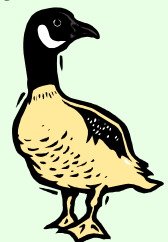
Bird or birding-related items are welcome as are other gift items, such as artwork, wreaths, homemade jams, quilts, etc.

If you will be unable to attend but have an item you'd like to donate, Joe Bugni will arrange to pick up donations ahead of time.



JOE BUGNI (831-6806) - jbugni@unwiredbb.com
HEATHER ELLISON (319-4721) - hk_ellison@yahoo.com

Bring cash or checkbook as we don't do credit!



Remember...We will NOT be meeting at Kern Supt of Schools!
Join us at University Square, 20th & K at 6:30pm

FOR THE BIRDS...

It's great to be part of an organization where "birds matter!" and to be involved with people who are concerned about wildlife and what's happening with our environment. Many of our members embody the saying, "Think globally, act locally!"

In small ways and large, Kern Audubon is making a difference in Kern County. On behalf of the chapter, let me say THANK YOU to some of these folks:

- Harry Love, who has spent hours and written many letters to elected officials and planning commission members about wind energy proposals and impact on birds
- Andy Honig, Bill Cooper & Rich O'Neil who continue to devote time and labor to the restoration of Panorama Vista Preserve and the Kern River Parkway
- Tim Lynch, for serving three years as Publicity Chr. and to Ginny Dallas for taking on this new responsibility
- Rod Lee & Richard Sparks, the webmasters for Kern Audubon and Kern Audubon-Tehachapi's websites
- The Field Trip Comm and co-chairs Deb See & Bill Moffat for planning diverse and excellent outings
- Kathy Love for making sure we have coffee, refreshments, greeters & raffle hosts for the meetings and to all who provide the goodies and meet & greet us
- The Kern Audubon-Tehachapi planning team: Mary Dufraim, Angela Guy, Carol Gates, Gail Gewain, Richard Sparks
- Trude & Scott Frazer, librarians the past two years, and to David Schaad, our new library manager

We are still looking for someone who would be willing to set up a Facebook page for Kern Audubon. If we want to reach a younger demographic, social media is very important. If you are interested or know someone who might be, please let me know!

Hope to see you at our Dec. 4th holiday gathering and auction fund-raiser, 6:30pm!

Madi Elsea, President

KERN AUDUBON EXECUTIVE BOARD

2012 - 2013

Madi Elsea, President

madielsea@aol.com; 322-7470

Al Caetano, Vice-President

alvic@bak.rr.com; 833-6705

Patty Richardson, Executive Secretary

turtletwoman88@yahoo.com

Gary McKibbin, Treasurer

gmckibbin@farmersagent.com; 392-1403

Harry Love, Conservation

love3@bak.rr.com; 589-6245

Richard Adams, Programs

adams14@live.com; 321-9527

Deb See & Bill Moffat, Field Trips

seemoffats@aol.com; 805-0232

Ginny Dallas, Publicity

vdallas@bak.rr.com - 301-8188

Kathy Love, Hospitality

kathylove64@gmail.com; 589-6245

Madi Elsea, Warbler Editor

madielsea@aol.com; 322-7470

Carol Gates, Tehachapi Rep.

Carol.gates18@gmail.com; 822-0214

Angela Guy, Tehachapi Rep.

Angelaguy@att.net; 304-6816

Ted Murphy, Past President

tmurphy@bak.rr.com; 325-0307

Tehachapi Birding

Kern Audubon-Tehachapi

Tues. Jan. 29 & April 30, 2013

7:00pm

Golden Hills Elementary School

Tehachapi CA

KERN AUDUBON'S LIBRARY

As I begin managing the library, I will have books available at each meeting for you to check out. For those of you who have had books for a long time please return them so others might enjoy reading them. Renew the book if you haven't finished reading it. If you have any questions about the library, please feel free to call me: 428-2841. I will be updating the list of books we have that is posted online, but in the meantime review our collection on the website: www.kernaudubonsociety.org

Below is a review of a new book to the library....feel free to check it out!

David Schaad email: davidws@pacbell.net



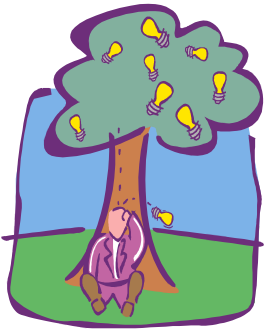
Songbird Journeys by Miyoko Chu

Movements of migratory birds from South and Central America across the Gulf of Mexico to the United States and Canada are at the mercy of the winds and weather. This book summarizes research into migratory bird life in layman's terms. We get the pulse of migratory bird life as the author delves into the reasons they migrate; where they go; how food cycles affect them and their travels; the affects of weather patterns and cycles and many other factors. The book explains why different birds interact with the different seasons and how food cycles affect bird populations.

The author shows how interrelated all aspects of nature are and that we humans must tread lightly to ensure that the balance is not unduly disturbed in order to avoid upsets that affect the lives of the birds we love to watch.

Kern Audubon Society, founded in 1974, is a chapter of the National Audubon Society.

Its mission is to provide educational programs and services that build awareness of the importance of birds and other wildlife and to promote conservation and restoration of natural habitats, primarily in Kern County.



DECEMBER WORKDAY AT PANORAMA VISTA PRESERVE

Saturday, December 8, 9-11 AM will be the next workday at Panorama Vista Preserve. The November workday was fantastic, with a very large number of workers. Members who attended were: *Lucy Clark, Clyde Golden, Dana Adams, David Schaad, Madi Elsea, Jerry Kay, Al Caetano, Bill McDonald, Andy Honig, Lynn James, Joe Bugni, Harry Love and Jan Graves.* Jan also brought ten very hard working members of Foothill High School's INTERACT Club. With all these great KAS workers, plus community members Paul Gipe, Monica Tudor and Mary Bryant, the mulching of the trees was completed. What to bring in December?: shovel, gloves, and water. Don't forget to come out in December, the last workday of 2012! Contact Harry (805-1420 or love3@bak.rr.com) for information. The preserve is located at the east end of Roberts Lane. Take Roberts exit off of Manor Drive and go left to the locked gate.

DECEMBER FIELD TRIPS

Wed. Walk December 12, 8:30am

This month's Wednesday "Walk" will actually be "birds & bikes". Bring your bike to the Manor Drive (across from Calvary Bible Church) parking lot for a morning of biking and birding along the Kern River Parkway. Maybe there will even be water in the river by then! Ranger Bill Moffat will be the leader. Bring own bike, binocs, water & snacks. Call Bill for more information: 201-9279.



Sat. December 15, 8:00am - Tejon Ranch

Scot Pipkin, Tejon Ranch Conservancy Public Access Coordinator, will lead this field trip for Kern Audubon along the San Joaquin Valley side of Tejon Ranch. There will be great views of the valley as well as birding in the oak woodlands. Possible sightings of condor and golden eagle plus many more! Meet at the Stockdale Hiway Park n Ride (between Real Rd. & Hiway 99) at 8:00am. It is likely to be cold and we will be doing some hiking, so dress accordingly. Bring water, snacks & a sack lunch. We will return to Bakersfield around noon. Call Deb See for information: 805-0232. Car pool donation: \$10.

Tule Elk Reserve Auto Safaris

On the second and fourth Sundays of the month the public is invited to get an "up close & personal" look at the Tule Elk and other wildlife at the Tule Elk Reserve less than 30 miles west of Bakersfield. Interpretive staff will be leading these automobile tours 11am - 12:30pm. Cost is \$8 per car. Call 764-6881 for information and to reserve a space!



BIRDING FESTIVALS

Bird festivals are fun! You meet other birders, visit new places, see lots of birds, hear interesting presentations, support local economies and much more. For information about festivals around the country, go to...

www.Americanbirding.org/festivals
www.birdwatchersdigest.com

For information about festivals in California, go to...
www.natureali.org/nature_festivals.htm

Galt Winter Bird Festival
 Sat. January 26, 2013 - 8am - 4pm
 Galt CA

WEBSITES to check out...

Info about birds? To learn more about birds, go to www.birds.cornell.edu, the website of Cornell Lab of Ornithology, the world leader in the study and conservation of birds.

Kern Birding For a comprehensive website about Kern Co. birding locations go to www.natureali.org/birding.htm.

Kern County Bird Sightings/photos For what's unusual in Kern County, go to kerncobirding@yahoo.com You'll find recent bird sightings, reports by Bob Barnes, Michael McQuerry, Alison Sheehey, pictures by Ken Kyle and others.

Audubon California has a great website about its activities and organization: www.Audubon-ca.org

Audubon in the news - To find out more about National Audubon happenings through an electronic newsletter, email chapterleaders@audubon.org or go to www.audubon.org

2012 AUDUBON CHRISTMAS BIRD COUNTS – KERN COUNTY

One of the traditions long-associated with the National Audubon Society is the annual Christmas Bird Count. Even older than Audubon itself, the CBC began in 1900 as an alternative to the traditional Christmas BIRD HUNT, in which teams shot as many birds as possible. The first count included 27 people in 25 locations, but they were armed with pencils and binoculars! The CBC is the oldest bird census in the world with over 50,000 volunteers in 2000 locations, providing one of the most important bodies of information on wildlife data in the world. The goal is to count all the birds in a 15 mile radius with teams being assigned to a section in that radius. If you are interested in participating in these daylong counts, contact the compiler listed below or if you have questions, contact Alison Sheehey at natureali@gmail.com or go to her website: <http://www.natureali.org/cbcs.htm>

SATURDAY December 15, 2012

- Butterbreedt CBC: Compiler: Charles Bragg, Phone: (310) 454-9662 - year began 1977
- Lancaster CBC, Los Angeles/Kern Counties: Compiler: Mary & Nick Freeman, Phone: (818) 247-6172 - year began 1980

SUNDAY, December 16, 2012

China Lake CBC: Compiler: Pete Woodman, Phone: (760) 377-3466 - year began 1957

TUESDAY, December 18, 2012

Buena Vista CBC: Compiler: Alison Sheehey, Phone: (760) 417-0268. - year began 1989

WEDNESDAY, December 19, 2012

- Bakersfield CBC: Compiler: John Wilson - year began 1949 held in 1950 resumed in 1973
- Tehachapi CB: Compiler: Larry Parmeter, Phone: (559) 276-8753 - year began 1992

THURSDAY, December 20, 2012

Bear Valley Springs CBC: Compiler: Alison Sheehey, Phone: (760) 417-0268 - year began 1995

FRIDAY, December 21, 2012

Tejon Ranch CBC, Kern & Los Angeles Counties: Compiler: Phoebe Prather; by invitation only - year began 2008

SATURDAY, December 29, 2012

Carrizo Plains CBC, Kern & San Luis Obispo Counties: Roger Zachary, Phone (805) 466-6222 - year began 1971

SUNDAY, December 30, 2012

Kern River Valley CBC: Compiler: Alison Sheehey, Phone: (760) 417-0268 - year began 1979

SATURDAY, January 5, 2013

South Fork Valley CBC: Compiler Denise LaBerteaux, Phone: (760) 378-4278 - year began 1992

Participants are typically assigned to teams based on their bird identification skill level and endurance. The count results are tabulated by the National Audubon Society and Cornell Lab of Ornithology. Help is needed on many of these counts, so find one that interests you and contact the compiler for more information.

Beginners to experts are welcome or maybe you know the area that a visiting birder doesn't. If you've ever heard yourself say, "Maybe it'd be fun to learn birds," here's a great opportunity. Call the contacts listed above to participate at any level.

Editors' note: *Many thanks to ALISON SHEEHEY for her generous gift of time and energy in making all the arrangements for the Kern County Christmas Bird Counts and thank you to all those who are serving as compilers!!*



Audubon CALIFORNIA

Kern River Preserve
18747 Highway 178
P. O. Box 1662
Weldon, CA 93283
Phone/Fax: 760-378-2531

October 23, 2012

Kern Audubon Society
P.O. Box 3581
Bakersfield, CA 93385

Dear Friends:

On behalf of the Audubon Kern River Preserve, we sincerely thank you for your generous gift of \$250.00, which we received on October 08, 2012. Your contribution will help us protect land and wildlife throughout the South Fork Valley and connect more people with nature.

You are an important partner and your support is vital to protecting this critical and unique place for future generations. We want to share with you some recent and ongoing accomplishments:

- ✧ We have raised \$112,000 from the Natural Resources Conservation Service, U.S Fish and Wildlife Service and private donors to do habitat restoration on the recently purchase Alexander Ranch. We will plant floodplain scrub habitat that will benefit San Emigdio Blue Butterfly, Loggerhead Shrike and Southwestern Pond Turtle and other species of wildlife. It will also be a great opportunity for volunteers and school groups to help us with our conservation work.
- ✧ Audubon Kern River Preserve partnered with the Mojave Desert Land Trust to purchase 1,341 acres that will be added to the Kiavah Wilderness Area. This effort protects Sage and Horse Canyons on the eastern slope of the Sierra Nevada. These canyons and their riparian oases are exceptionally important to migrating birds as they complete their crossing of the Mojave Desert on this part of the Pacific Flyway.
- ✧ The Kern River Preserve has grown from 1,127 to 3,434 acres since Audubon was granted ownership by The Nature Conservancy in 1997. Since that time, Audubon and our partners have conserved more than 24,000 acres of habitat in the Southern Sierra Nevada.
- ✧ Our staff continued our battle to keep the South Fork Kern River Valley free of invasive weeds like salt cedar, tree of heaven, giant cane, perennial pepperweed and purple loosestrife. We are partnering with the Mojave Desert Resources Conservation District to seek out new funding to continue this work in the coming years.
- ✧ The South Fork Kern River continues to meander toward our current Visitor Center and the flooding risk at this site increases every year. With a grant from the Sierra Nevada Conservancy we have completed the design for a new Center. Now we are challenged with raising funds to build and move to a safer location on the Preserve.
- ✧ Volunteers continue to provide much needed help at the Preserve with our Southwestern Pond Turtle Head Start program, trail maintenance, habitat restoration, outreach events and bird feeding.
- ✧ Many people enjoyed our Turkey Vulture last month. Stay tuned for our 2013 nature festival schedule.

Thank you for your dedication to conservation in Kern County and the Southern Sierra Nevada. You are invited to visit the Preserve, which is open for self-interpretation 365 days per year from sunrise to sunset. Check out our webpage for details on how you can visit and enjoy our Preserve – kern.audubon.org.

Sincerely,

Reed
Reed Tollefson
Preserve Manager

Dear Kern Audubon, Thank you all for your most generous and longstanding support for Kern River Preserve!



Audubon CENTENNIAL CELEBRATING 100 YEARS OF CONSERVATION

AUDUBON'S WARBLER

Kern Audubon Society
PO Box 3581
Bakersfield CA 93385



www.kernaudubonsociety.org

Non-Profit Org
US Postage
PAID
Bakersfield CA
Permit #93

RETURN SERVICE REQUESTED

Join KERN AUDUBON for these activities...

- Tues. Dec. 4, 6:30pm - Holiday Gathering & Auction
- Sat. Dec. 8, 9-11am - Panorama Preserve Workparty
- Wed. Dec. 12, 8:30am - Bird n Bike field trip
- Sat. Dec. 15, 8am - Tejon Ranch field trip

Membership Application -- KERN AUDUBON SOCIETY (C2ZC300Z)

If you would like to be part of a grass-roots conservation organization with a distinguished history, join the National Audubon Society and Kern Audubon! Please complete the form below and send with your check !

Membership includes *Audubon Magazine* (6 Issues) and the *Audubon's Warbler* (10 issues)

____ New Member \$20

Make check payable to **NATIONAL AUDUBON SOCIETY**

Send this form and your check for \$20 to:

Kern Audubon
PO Box 3581
Bakersfield CA 93385

Name(s) _____ Amount enclosed _____

Address _____ E-mail _____

City _____ Zip Code _____ Phone # _____

Please indicate if you would like to receive your *Audubon's Warbler* electronically: ____yes ____no